

# Fingertip Angle Beam Transducers

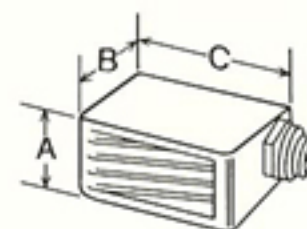
Technisonic's **Fingertip Potted Angle Beam Transducers (ABFP)** are best suited for the inspection of limited access areas with all commercially available flaw detectors. The integral wedge design insures excellent signal/noise ratios and their small size allows testing of slightly curved or irregularly shaped surfaces. Rear mounted microdot connectors are standard but top mounted microdots are available.

Technisonic's **Microminiature Angle Beam Transducers (MMAB)** are ideal for testing situations where access to the area of interest is extremely limited. A top mounted microdot connector is normally supplied but rear mounted connectors are available on special order.

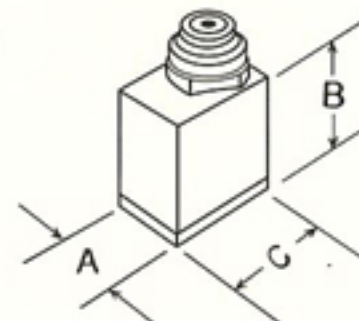
ABFP				
Frequency (MHz)	Effective Angle in Steel			
	45°	60°	70°	90°
<b>Element Dimensions: .250" x .250"</b>				
2.25	ABFP-0202-45	ABFP-0202-60	ABFP-0202-70	ABFP-0202-90
5.0	ABFP-0502-45	ABFP-0502-60	ABFP-0502-70	ABFP-0502-90
10.0	ABFP-1002-45	ABFP-1002-60	ABFP-1002-70	ABFP-1002-90
<b>Element Dimensions: .375" x .375"</b>				
2.25	ABFP-0203-45	ABFP-0203-60	ABFP-0203-70	ABFP-0203-90
5.0	ABFP-0503-45	ABFP-0503-60	ABFP-0503-70	ABFP-0503-90
10.0	ABFP-1003-45	ABFP-1003-60	ABFP-1003-70	ABFP-1003-90

• ABFP Series is available with composite element on request.

MMAB				
Frequency (MHz)	Effective Angle in Steel			
	45°	60°	70°	90°
<b>Element Dimensions: .187" x .187"</b>				
5.0	MMAB-0501-45	MMAB-0501-60	MMAB-0501-70	MMAB-0501-90
10.0	MMAB-1001-45	MMAB-1001-60	MMAB-1001-70	MMAB-1001-90



Element Size	Dimensions		
	A	B	C
.25" sq.	.36"	.60"	.74"
.37" sq.	.49"	.60"	1.00"



Dimensions		
A	B	C
.25"	.37"	.37"